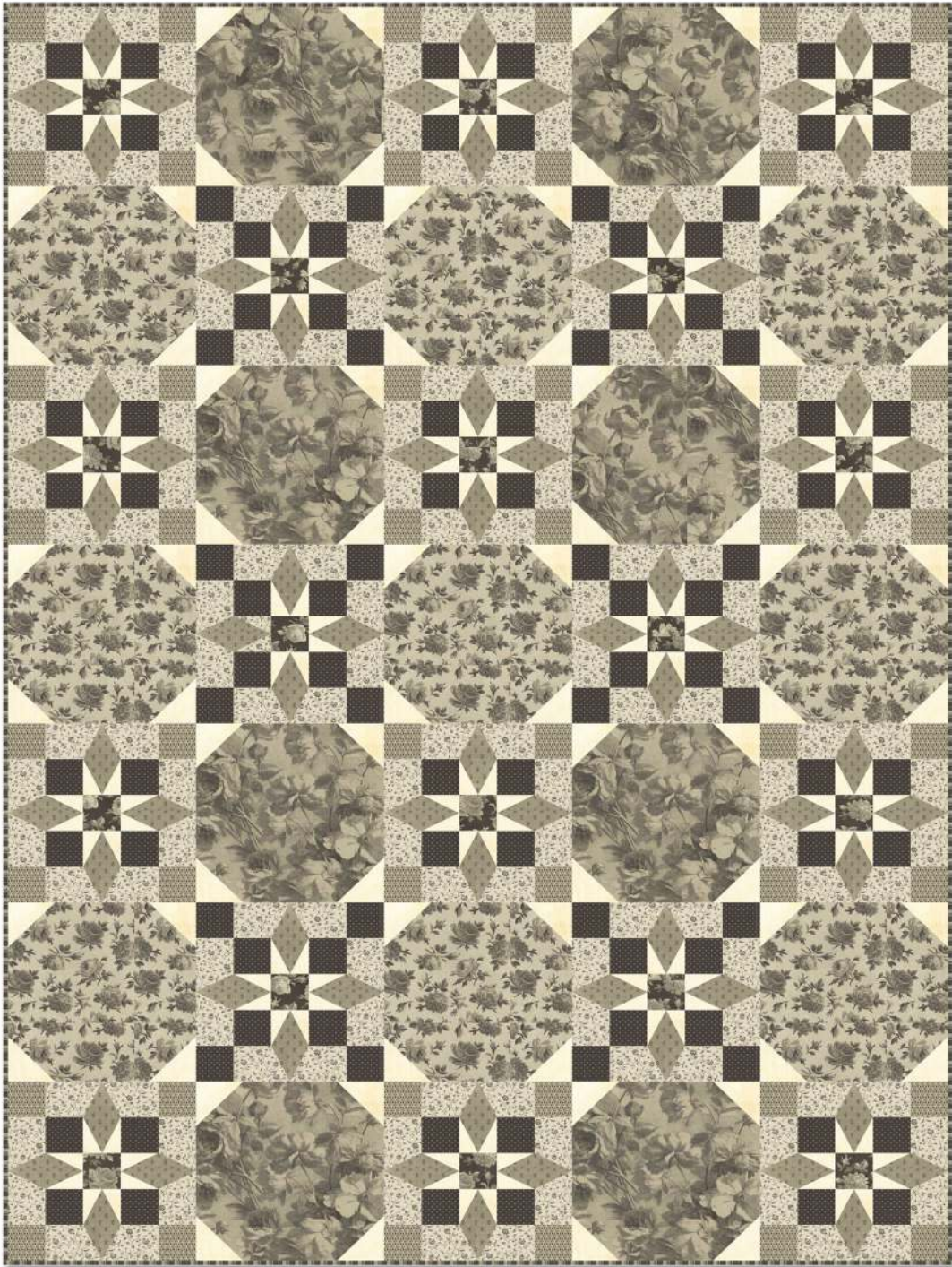


# Broken Chain

Designed by Wendy Sheppard  
Featuring the Shades of Grey Collection by Nancy Gere  
Size: 50" x 70"



Check [www.windhamfabrics.com](http://www.windhamfabrics.com) Free Project section to see if there are any pattern updates before you start your quilt project



812 Jersey Ave ~ Jersey City, NJ 07310 ~ 201.659.0444 ~ FAX: 201.659.9719  
[www.windhamfabrics.com](http://www.windhamfabrics.com) email: [retail@windhamfabrics.com](mailto:retail@windhamfabrics.com)



# Broken Chain

Page 2

## Supplies:

- A. 1/4y charcoal rope print fabric (41296-1 charcoal)
- B. 1 1/8y cream tonal fabric (37098-11 cream)
- C. 5/8y charcoal dot print fabric (41295-1 charcoal)
- D. 5/8y focal print fabric (41290-X Multi)
- E. 1 3/8y bone floral vine print fabric (41292-2 bone)
- F. 1/4y charcoal toss floral print fabric (41291-1 charcoal)
- G. 7/8y stone geometric print fabric (41293-3 stone)
- H. 1y bone toss floral print fabric (41291-2 bone)

Optional: 1/2y charcoal stripe (41294-1 charcoal), cut into 2 1/4" strips. Piece strips to make a continuous binding strip.

56" x 76" piece of backing fabric (4 3/8y)

56" x 76" piece of batting

## Basic sewing supplies



41296-1 Charcoal



37098-11 Cream



41295-1 Charcoal



41290-X Multi



41292-2 Bone



41291-1 Charcoal



41293-3 Stone



41291-2 Bone

# Broken Chain

Page 3

## STAR Block Construction (using top left block as example)

1. Sew together: 1 cream tonal "E", 1 cream tonal "D", and 1 stone geometric "F", as shown.

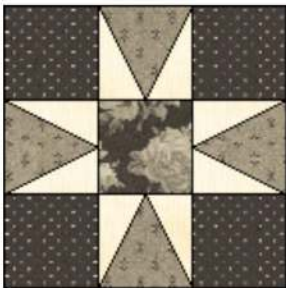


Repeat to make a total of 4 sewn units.

2. Sew 2 sewn units to the opposite sides of 1 (2 1/2" x 2 1/2") charcoal toss floral square.



3. Arrange and sew 2 (2 1/2" x 2 1/2") charcoal dot squares to the opposite sides of 1 sewn unit to make a row. Repeat to make a total of 2 rows, and add the rows to the remaining opposite sides of charcoal toss floral square to complete block center.

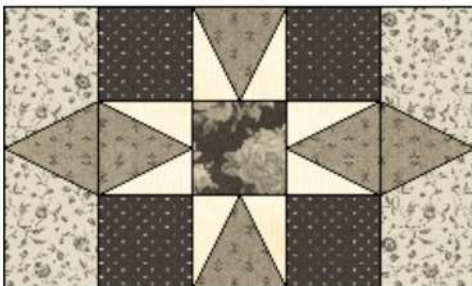


4. Sew together 1 bone floral vine "B", 1 bone floral vine "C", and 1 stone geometric "F", as shown.



Repeat to make a total of 4 sewn units.

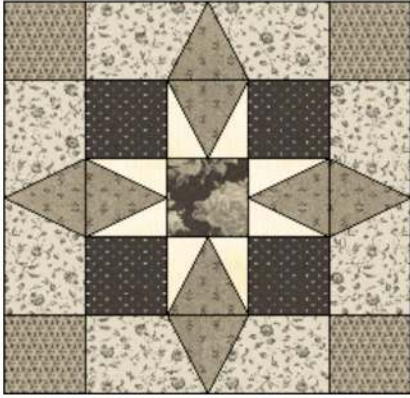
5. Sew 2 sewn units (made in step 4) to the opposite sides of block center.



# Broken Chain

Page 4

Sew 2 (2 1/2" x 2 1/2") charcoal rope squares to the opposite short sides of sewn unit (made in step 4) to make a row. Repeat to make 2 rows, and add the rows to the remaining opposite sides of block center to complete 1 block.

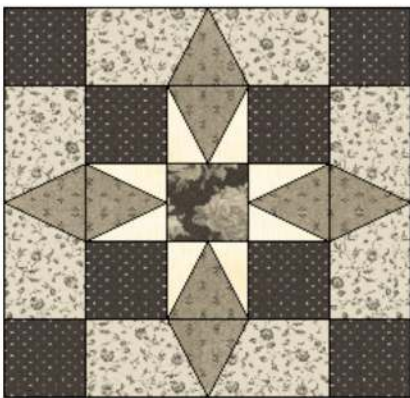


6. Repeat to make a total number of blocks in the following colorways:

12 blocks



6 blocks





# Broken Chain

Page 5

## SNOWBALL Block Construction (using focal print block as example)

1. Draw a diagonal line on the wrong side of 1 (2 1/2" x 2 1/2") cream tonal square. Place square, right sides together, at a corner of 1 (10 1/2" x 10 1/2") focal print square. Sew on drawn line. Trim 1/4" away from sewn line. Open and press to reveal cream tonal corner triangle. Repeat with 3 additional (2 1/2" x 2 1/2") cream tonal squares at remaining corners of the same (10 1/2" x 10 1/2") focal print square to complete 1 block.



2. Repeat to make a total of blocks in the following colorways:

9 blocks



8 blocks



WINDHAM FABRICS

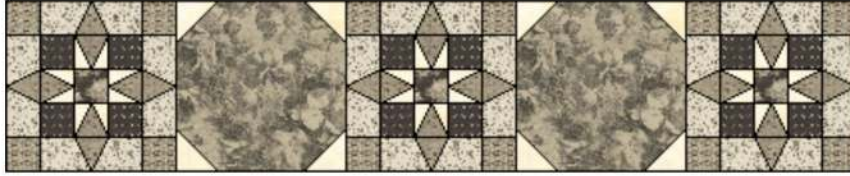
# Broken Chain

Page 6

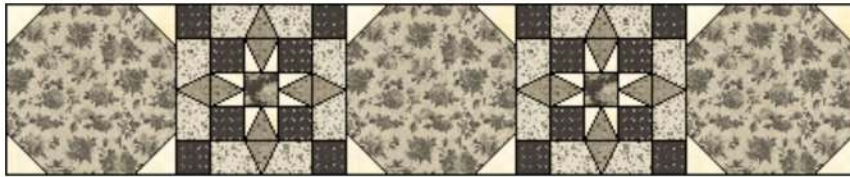
## Quilt Top Assembly:

1. Arrange and sew blocks into rows.

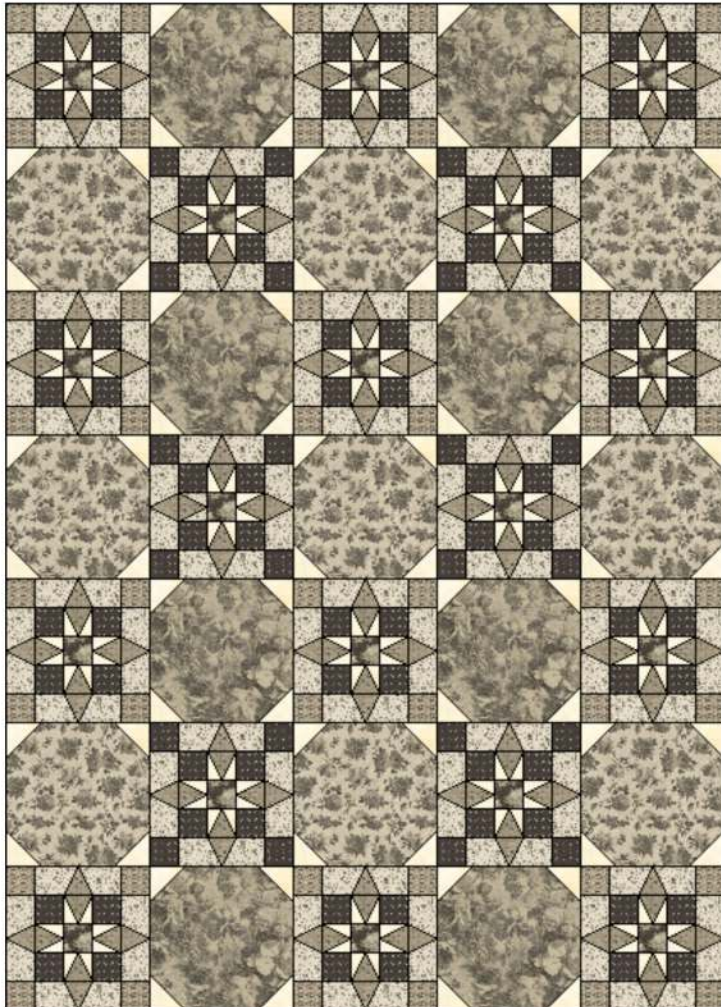
Rows 1, 3, 5, 7



Rows 2, 4, 6



2. Sew rows together to complete quilt top.



# Broken Chain

Page 7

## Quilting Instructions:

1. With the backing fabric laying taut, place batting and then quilt top to form quilt sandwich. Baste sandwich.
2. Quilt as desired.
3. Bind to finish quilt.

Be sure to visit [www.windhamfabrics.com](http://www.windhamfabrics.com) to see the complete collection  
and to download other Free Projects

# Broken Chain

Page 8

## Nine Patch Star Variation

Key Block (7/20 actual size)

